

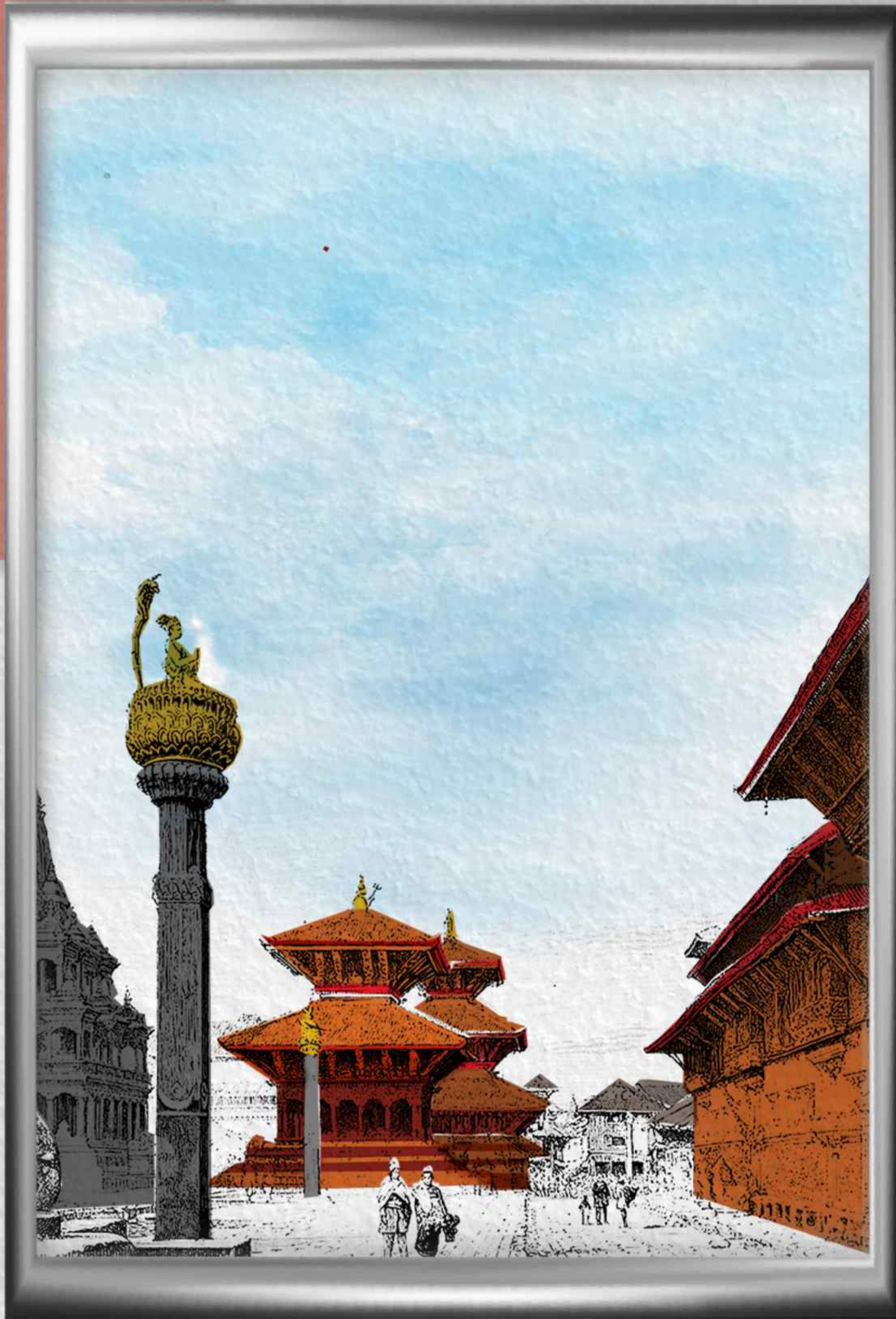


SQUARE  
hotel



**Deluxe Boutique Hotel**





## What We Offer?

Located in the heart of the city, our hotel offers the perfect combination of sophistication and comfort for both business and leisure travelers. Our guest rooms are elegantly appointed with top-of-the-line technology friendly amenities, and our on-site restaurants, bars, spa and swimming pool area offer the perfect place for relaxation after a long day of meetings.

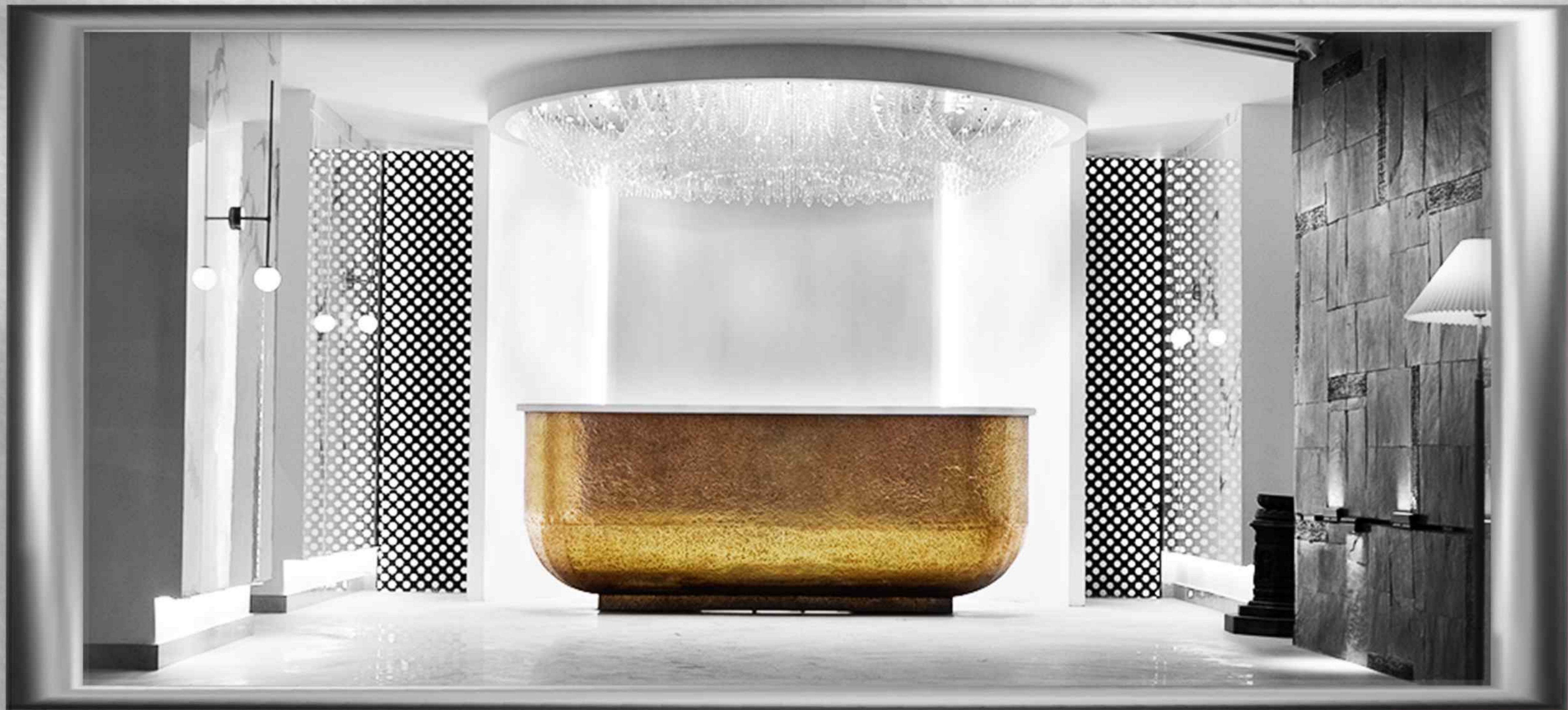
We understand that finding the right accommodation for your business trips can be a challenge, and we know that our hotel is the perfect solution. We offer competitive rates for corporate bookings and have a dedicated team of professionals who can assist with all of your travel needs. In addition to our exceptional accommodations, we also offer a range of meeting and event spaces that are perfect for business gatherings, conferences, and other professional and personal celebrations.



## Location

The hotel building is 750 m from the UN House and Social Welfare Council. It is located before the Hermann Helmers German Bakery and next to Ward No. 3 Lalitpur Metropolitan Municipality Office.







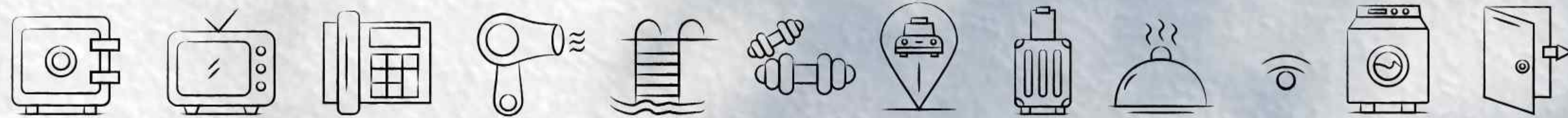
## The Interior

Square hotel is all about luxury, refinement, grace, and heritage. Minimal and modernized interior of the hotel give the idea of space and openness. The golden touch and spinning prayer wheels in the lobby area reflects the meeting point of heritage and luxury.

Through the illuminating rays of natural light, the old-fashioned silver coins placed in the wall invoke a sense of history and remind you of Nepal's glorious past. Decades of coin collection dating back to the 1750s from the Malla period can be seen being displayed in the walls of Square hotel.

# Rooms

Experience unparalleled comfort with our 6-layered 12-inch mattresses, luxurious 100% cotton linens, and towels. Enjoy the ultimate shower experience with a thermostatic high-pressure shower, stabilized temperatures, and top-tier sound and thermal insulation for a secluded city stay. Additional amenities include an iron with iron board, safety locker, tea coffee center with mineral water, mini bar, and Tilt & Turn openable windows for a breath of fresh air.



## Standard King

(18 Keys)

270 sq.ft/ 25 sq.m

## Standard Twin

(12 Keys)

270 sq.ft/ 25 sq.m

## Standard Queen

(6 Keys)

270 sq.ft/ 25 sq.m





## Executive Suite (2 Keys, 515 sq.ft, 50 sq.m)

The Suite at Square Hotel defines luxury for discerning travelers. Spanning 50 square meters, these state-of-the-art rooms feature a jacuzzi, spacious shower, and smart WC for added convenience. A 55-inch smart TV, automated controls, and a king-size mattress ensure an indulgent and comfortable stay. With electronic frost-able glass, the suite guarantees maximum privacy, setting a new standard for opulence.



## Apartment Suite (1 Keys, 770 sq.ft, 75 sq.m)

The focal point of our suite is the king-size mattress, esteemed for its exceptional comfort. Guests can anticipate a truly restorative and indulgent sleep experience, complementing the lavish ambiance of the room. The Suite at Square Hotel sets an unparalleled standard for opulence and sophistication, offering a warm invitation to the discerning modern luxury traveler. This suite accompanies a twin room and a living room able to host a family. Enjoy a long stay with us.



# Food and Beverage Outlets



## Emerald Coffee Shop

Spread over 1000 sq ft, exuding grandeur with spinning prayer wheels. Earthy tones reflect greenery, complemented by natural light through 24 ft ribbed glass. Enjoy peaceful seating for dining, gatherings, and workstations, evoking the comfort of a private residence. Shadows of 'tikijhya' and golden streaks create a serene atmosphere for respite. Indulge in continental, Indian, and traditional Nepali flavors, available 24/7 for in-house and walk-in guests.



## Pebbles Terrace Garden

Offering innovative cocktails, premier wine and whiskey selections and beholding the beautiful skyline of Kathmandu valley is pebbles, our terrace garden. With natural sound of water flowing and earthy smell of nature, pebbles allows you to enjoy a relaxed sundowner, a vibrant afternoon lunch and intimate celebrations of life. The outlet offers multicuisine.

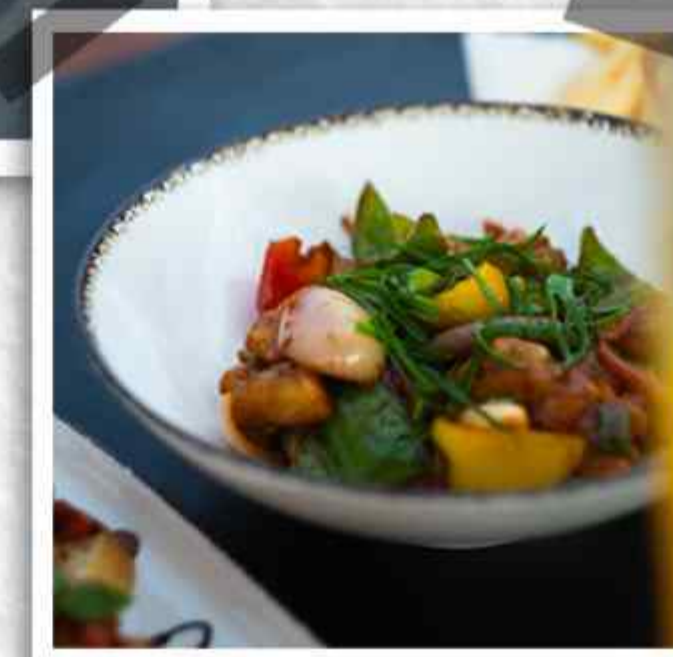


# pebbles

*terrace garden*



*#Best Moment*

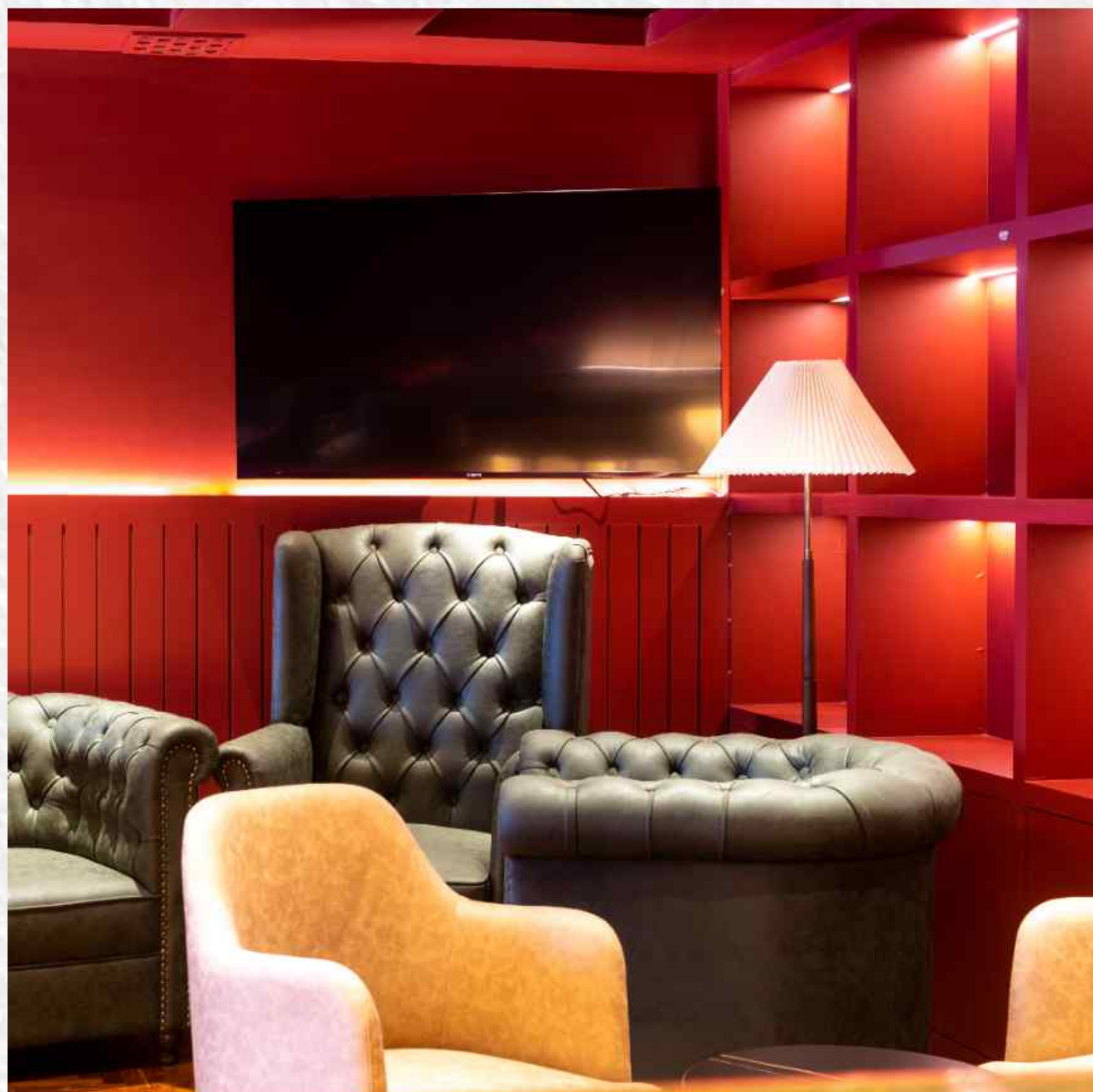




## Square Health & Pearl Pool Deck

Escape the city's chaos at our oasis, Pearl. Immerse yourself in the luxury of our heated infinity pool or unwind on the deck in the warm afternoons or cool evenings. The serene atmosphere of Pearl offers a tranquil space for relaxation and zen. Our dedicated zone for physical well-being, whether a Fitness Centre or space for exercises, stretches, yoga, or meditation, provides an opportunity to rejuvenate your body and mind.

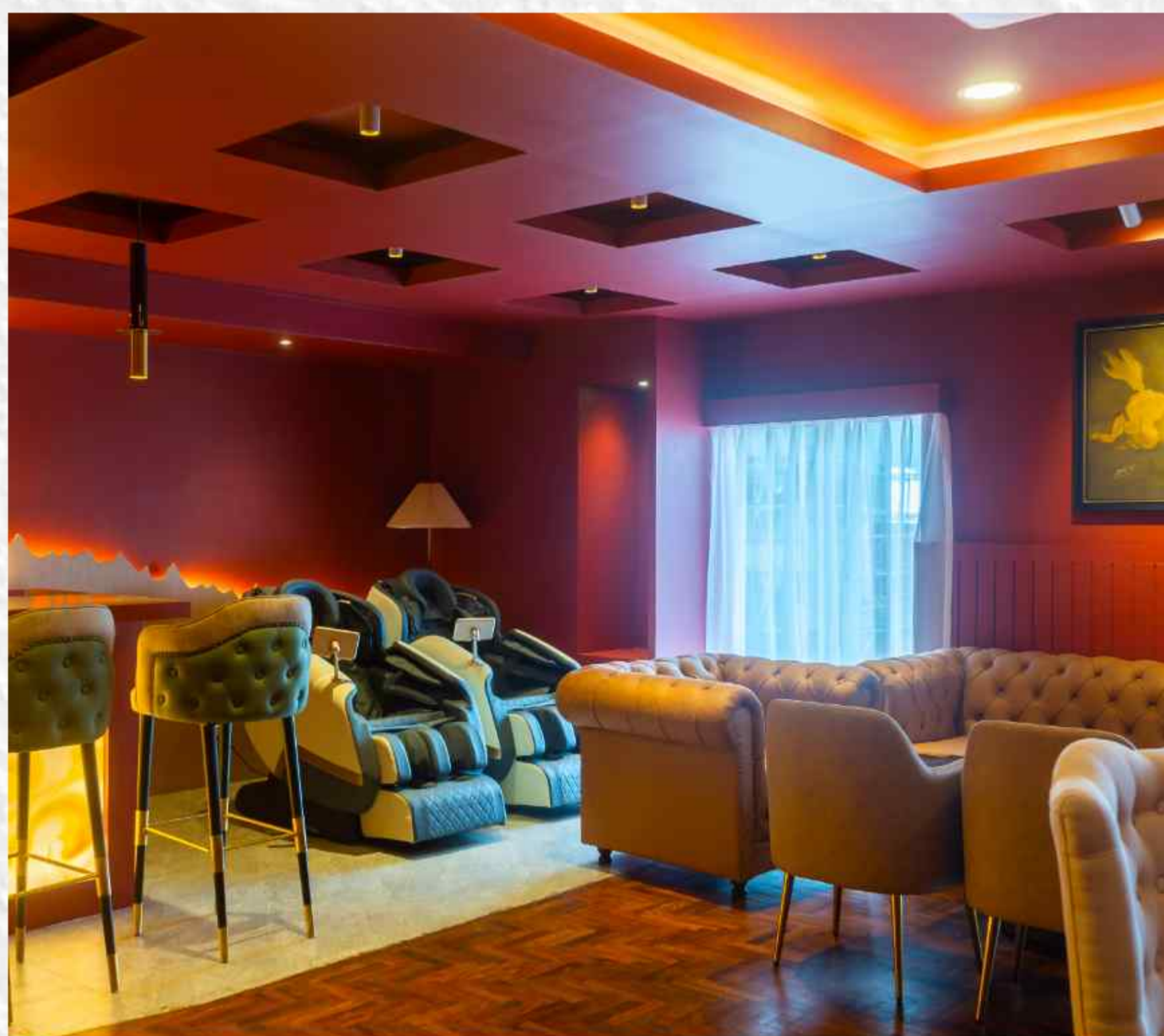


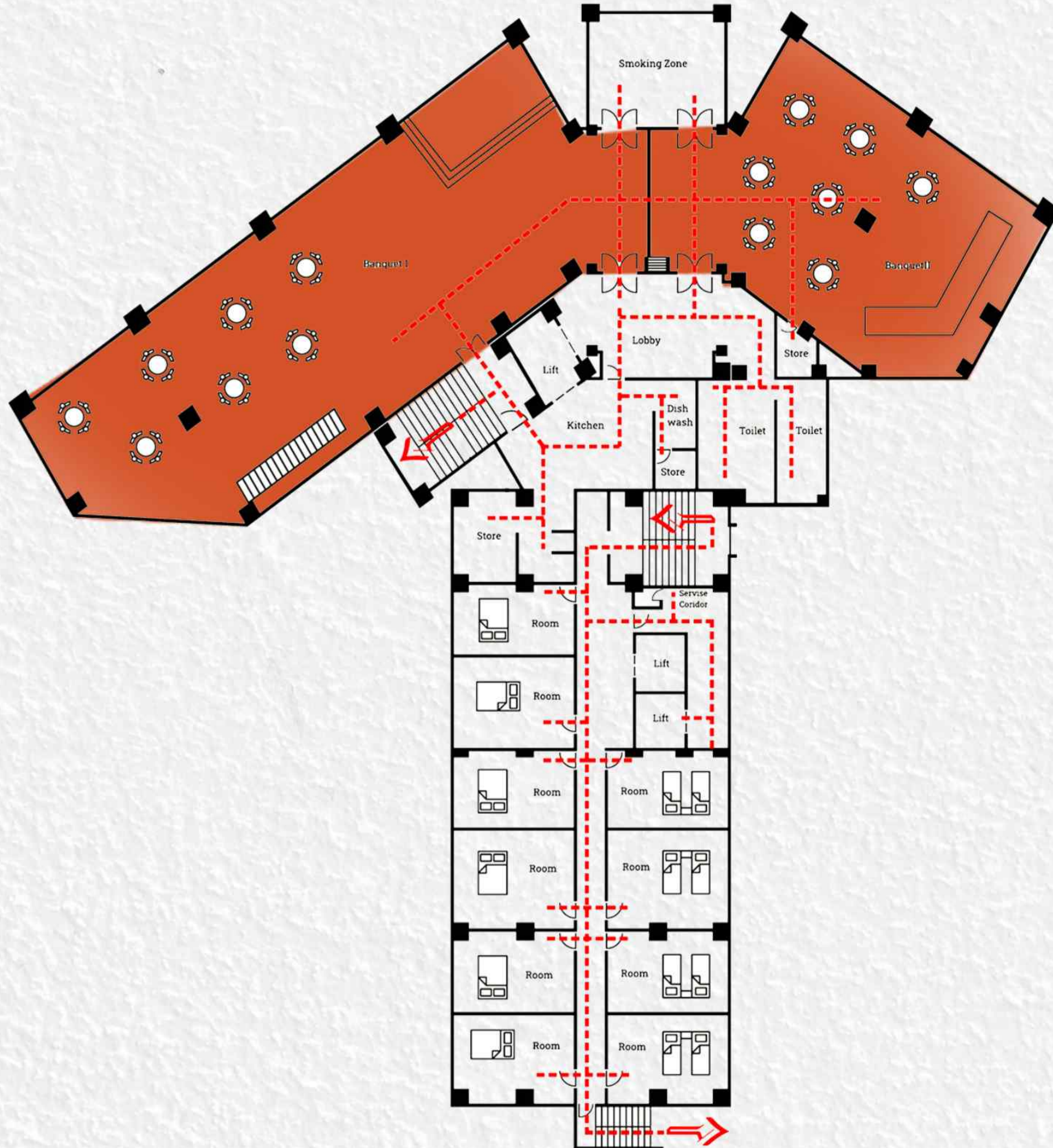


# Square Elite

Perfect for 30 guests.

This club lounge is our exclusive royal lounge with private butler, exclusive bar and set menu. A private and personal space for small meetings, lunches, dinners, and other celebrations. With a timeless yet contemporary feel, its sleek interior boasts a variety of options to fit your preferences of meetings and events. It is also our exclusive lounge for elite room guests to enjoy breakfasts, exclusive drinks, and dinner.





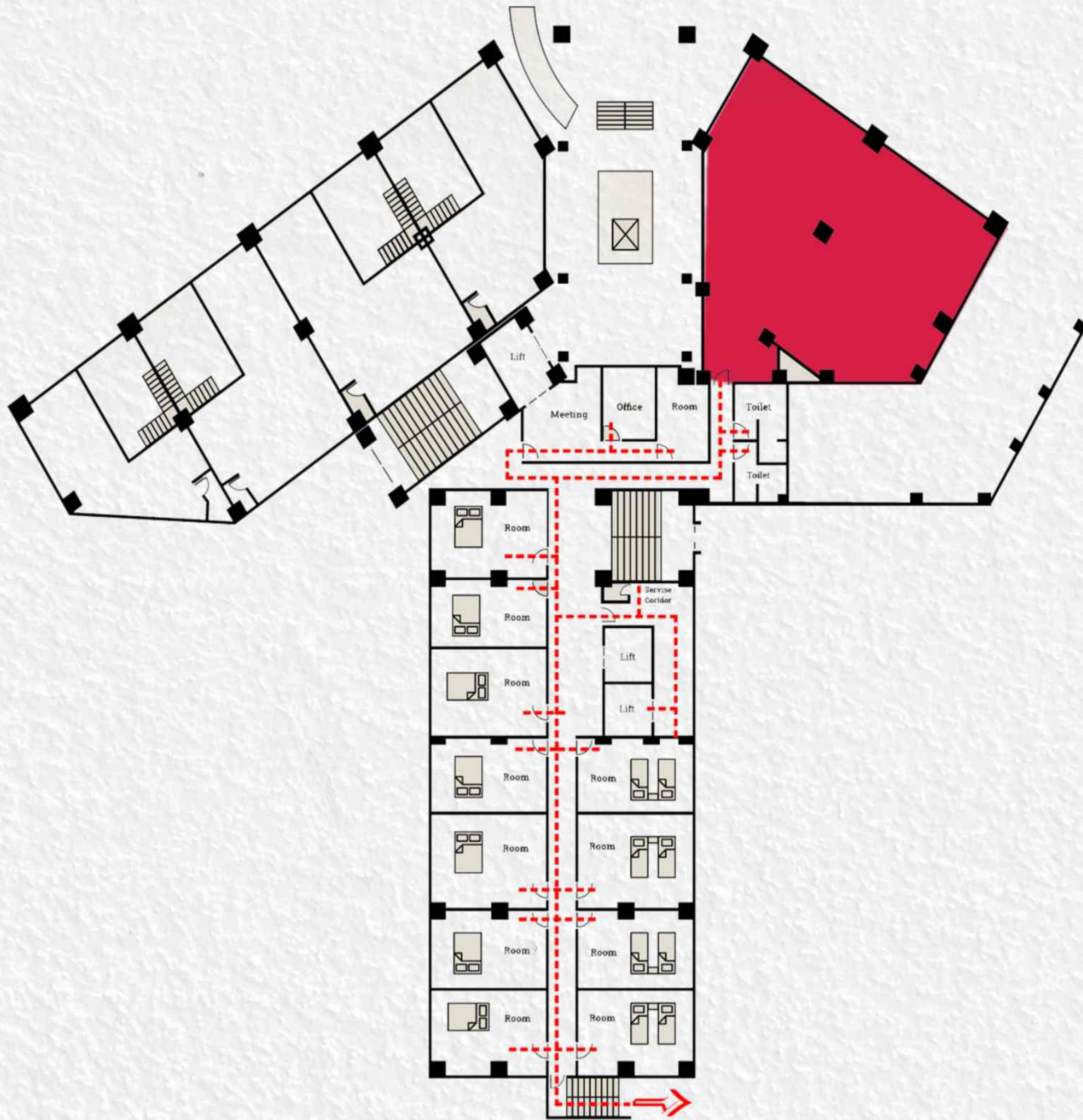
# Simirk Hall



First Floor

Perfect for Large Gatherings with a Capacity of 500 Guests.





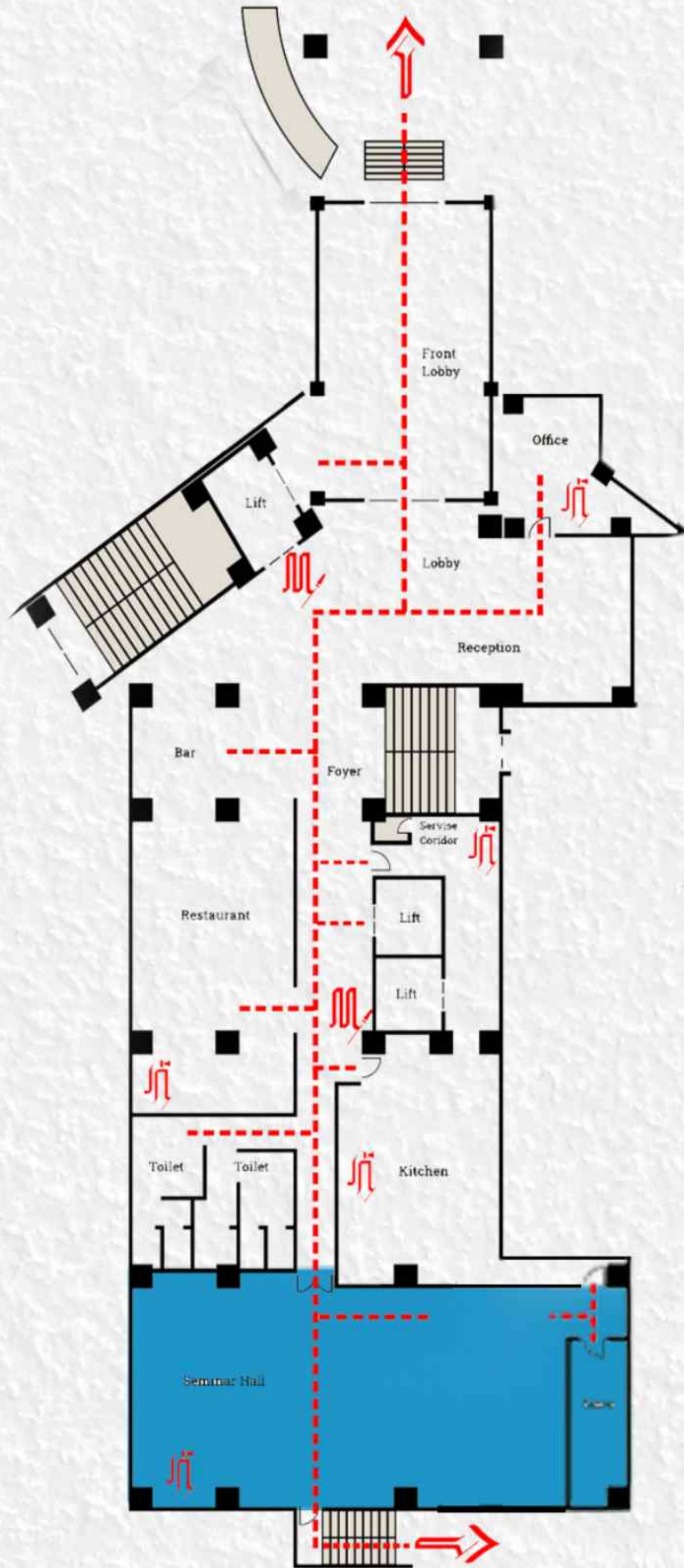
## Ruby Hall



First Floor

Elegant Space for 80 Guests.





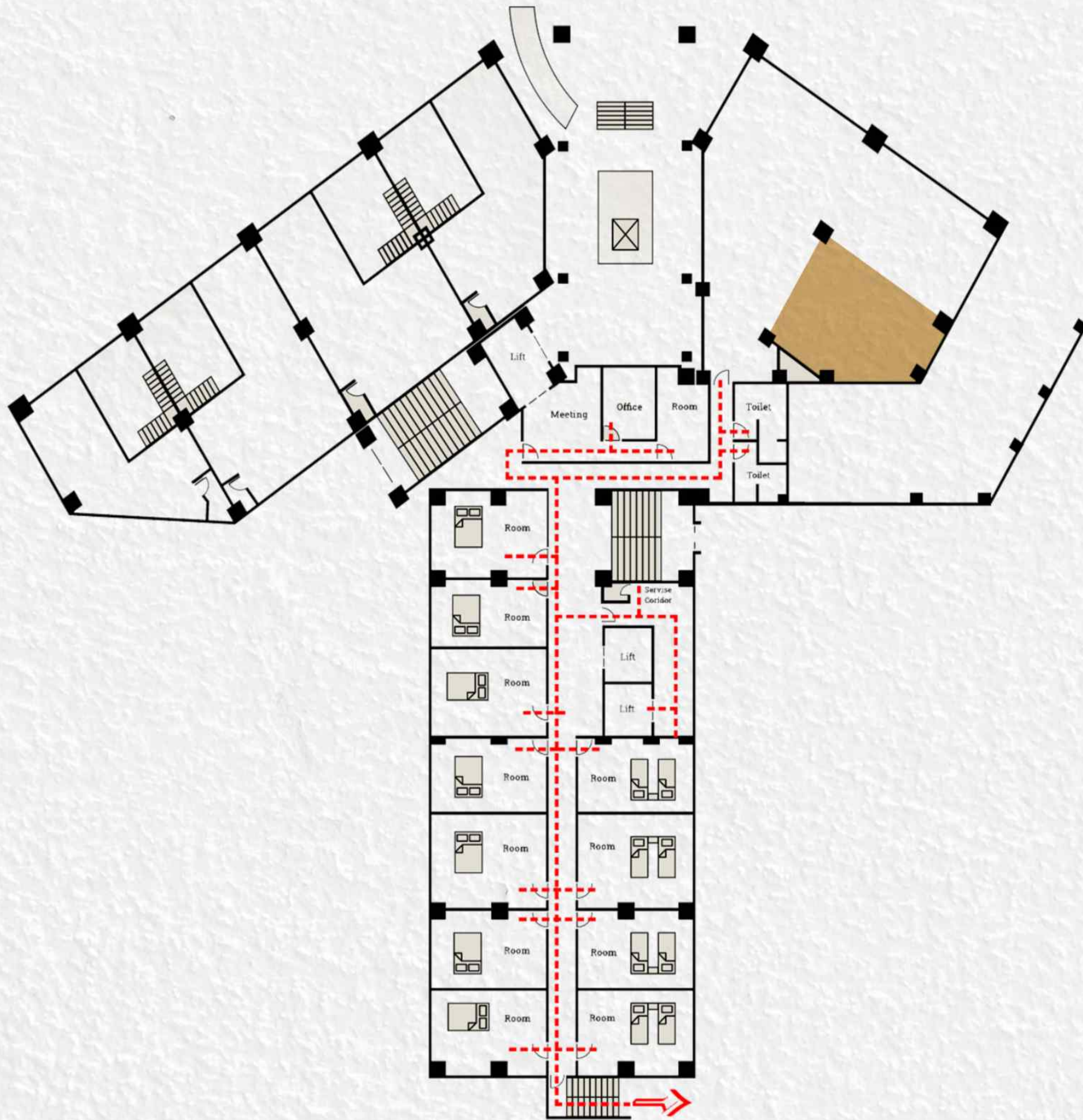
# Neel Hall



Ground Floor

Perfect for Intimate Setting for 110 Guests.





## Board Room



First Floor

Perfect for meeting for 15 guests.



## FactSheet

Room Name	Height of the Ceiling (ft)	Room Size (Sq. ft)	Banquet/ cluster round table	Reception/ Standing and bar stools	Theater/ Auditorium	Classroom	Boardroom/ conference	U-Shape	Hollow Square	Exhibition (10x10 stalls)
<b>Simirk Hall</b>										
<b>Simrik A</b>	20	4060	150	400	400	250	135	110	110	20
<b>Simrik B</b>	10	1950	50	200	150	120	60	50	50	10
<b>Simrik A+B</b>		6010	200	500						35
<b>Neel Hall</b>										
<b>Neel Hall</b>	12	1270	50	85	150	50	30	40	25	
<b>Ruby Hall</b>										
<b>Ruby Hall</b>	10	895	30	85	60	50	25	25	25	5
<b>Pre-function Area</b>	10	430		40						3
<b>Board room</b>	10	205					12	12	15	
<b>Pebble</b>										
<b>Terrace Bar And Lounge</b>		3700		150						
<b>Emerald</b>										
<b>emerald Coffee Shop</b>		975	40							



# Certificate of Registration



This is to certify that the Quality Management System of

**TDR SQUARE PVT LTD**

PULCHOWK - 3 LALITPUR 44700 NEPAL

is in accordance with the requirements of the following standard

**ISO 9001:2015**  
(Quality Management System)

## SCOPE

PROVIDING HOTEL, RESTAURANT, BAR, HEALTH CLUB, SWIMMING POOL,  
CONFERENCE HALL, SPA AND SAUNA SERVICES.

(IAF Code: 30,39)

Certificate Number : 080424019726

Initial Registration Date : 08-APR-2024  
1<sup>st</sup> Surveillance Date : 08-MAR-2025  
2<sup>nd</sup> Surveillance Date : 08-MAR-2026  
Certificate Expiry Date : 07-APR-2027

**To verify certificate, visit at :**

[www.arscert.com](http://www.arscert.com)  
[www.uafaccreditation.org](http://www.uafaccreditation.org)  
[www.iafcertsearch.org](http://www.iafcertsearch.org)

Issued by ARS Assessment Private Limited

*Abhishek*  
Managing Director



UAF Address : 400, North Center Dr, STE 202, Norfolk, VA 23502, United States of America

This certificate remains the property of ARS and must be returned to ARS on Cancellation or Suspension of the certificate. Validity of the certificate is subject to successful completion of surveillance audits. Further clarification regarding the scope of this certificate and the applicability of standard may be obtained by consulting the Organisation on [info@arscert.com](mailto:info@arscert.com)



# SQUARE forward

Dear Valued Guest,

At Square Hotel, we believe that responsible and sustainable tourism is the key to a brighter future for our planet. That's why we have implemented the Square Forward Program, a set of initiatives and measures aimed at reducing our impact on the environment, promoting guest comfort, and supporting local communities. Here are just a few of the ways we're making a difference:

- We use eco friendly concrete bricks and Autoclave Aerated Blocks made from Fly-ash to ensure superior insulation and reduce our use of topsoil.
- Our double-glazed tilt and turn windows provide optimal insulation and allow guests to enjoy fresh air.
- Touch-free features such as faucets and voice-activated controls minimize the risk of virus and bacterial infections.
- We have installed thermostatic showers and sprinkling faucets in each room, and avoided using bathtubs, to minimize water usage and reduce energy costs.
- Our VRF air conditioning systems provide optimal climate control while reducing costs.
- We have used fiberglass for wood carvings and eco-friendly Rubber wood, sourced from farmed rubber trees, to construct the guest rooms.
- Heat pump technology is used for all heat/cold generating machineries, and LED lighting is used throughout the hotel.
- The building is designed to be earthquake-resistant and is built on a rock foundation.
- We source 100% renewable power from the grid, and have adopted ground water recharging mechanisms to counteract the reduction in ground water penetration caused by using concrete.
- Our waste is recycled using local partners, such as organic food waste which is hand-picked for feeding farmed boars.
- We promote social inclusivity and have a management team comprised of 50% women.

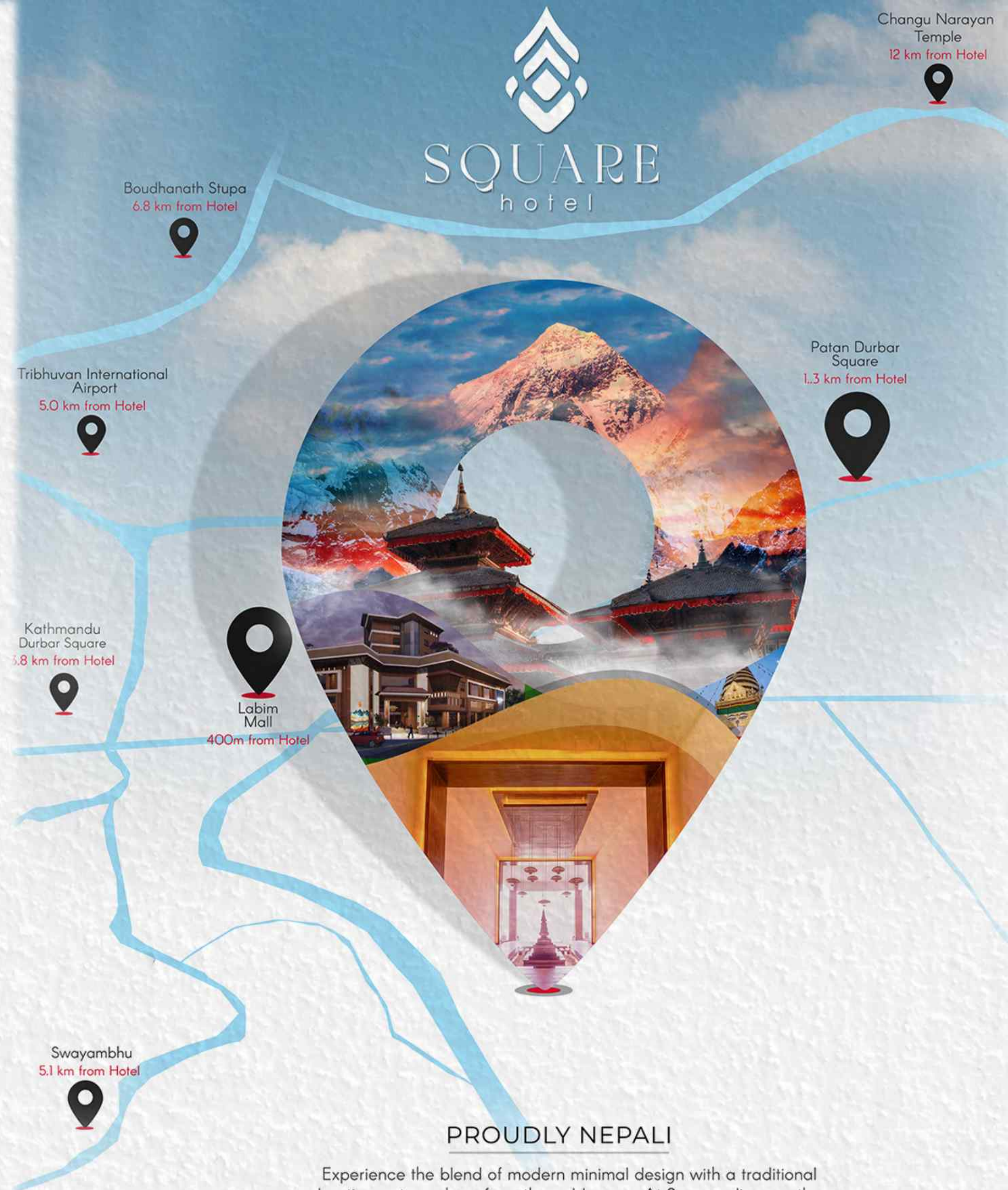
At Square Hotel, we believe that small actions can make a big impact. Join us in our mission to create a sustainable and responsible future for tourism.

Sincerely,  
*Romi Aryal*

Romi Aryal,  
Managing Director



# SQUARE hotel



Boudhanath Stupa  
6.8 km from Hotel

Tribhuvan International  
Airport  
5.0 km from Hotel

Kathmandu  
Durbar Square  
5.8 km from Hotel

Swayambhu  
5.1 km from Hotel

Labim  
Mall  
400m from Hotel

Patan Durbar  
Square  
1.3 km from Hotel

Changu Narayan  
Temple  
12 km from Hotel

## PROUDLY NEPALI

Experience the blend of modern minimal design with a traditional boutique atmosphere from the golden era. At Square, discover the collection of dining, exclusive lounges, elaborate conferences, and fitness. Stay with us and explore the perfect combination of sophistication and comfort.



SQUARE  
hotel



+977-1-5970227



Pulchowk,  
Lalitpur, Nepal



[www.squarehotelktm.com/](http://www.squarehotelktm.com/)

